

# Linear Curved Counter Standard/Pro



Unit shown is pro unit option with optional internal shelf.

*This high quality counter can be used in any modular scheme, this lightweight curved counter is easily transported, ideal for all exhibition applications*

## features & benefits

- Anodised aluminium construction
- Available in 30° and 45° angles
- Flat packed, easy to transport and quick to assemble
- No tools required
- 50mm modular post system
- Linear twist and lock
- Carry bag are available as extra cost options (AB112A for 30° AB221 for 45°)
- 30° available with top shelf LK028-002 and 45° available with top shelf LK028-004

### hardware specifications

Hardware dimensions (mm):

**LK028-001** 1010(h) x 1025(w) x 546(d)

**LK028-002** 1095(h) x 1025(w) x 546(d)

**LK028-003** 1010(h) x 1531(w) x 607(d)

**LK028-004** 1095(h) x 1531(w) x 607(d)

Load Bearing:

50kg approx

### graphic size (mm):

Recommended graphic size (mm):

Please refer to Graphic template

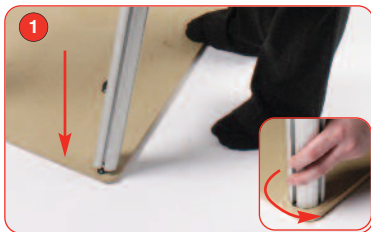
Recommended graphic substrate:

2-3mm thick foam board

# Assembly Instructions



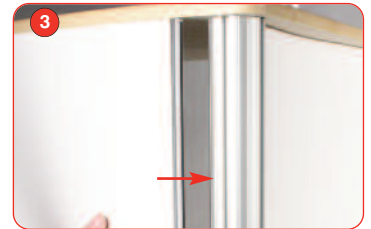
Kit Includes: 1x table top, 1x base, 4x linear 50mm round post, 4x adjustable feet, 6x wing extrusion



1 Start by placing the top of the counter face down with the twist and lock locators facing up. Place the posts into the twist and lock locators and twist anti-clockwise to lock and clockwise to unlock

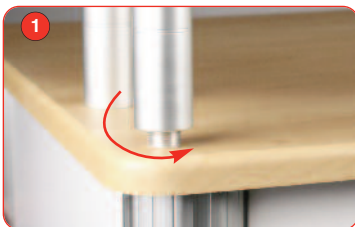


2 Place the base of the counter over the linear post and place the adjustable feet through the washer and into the base of the counter. Screw into the post until in required position. Hand tighten the nut to secure into place.



3 To attach the graphic simply click the PVC wing extrusion into the channel in the 50mm round post. Repeat this step for the remaining graphics

## Top shelf assembly (pro unit only)



1 Screw the stand-off's down onto the stand-off locators until fully secure. Repeat this for the remaining stand-off's



2 Place the pre-drilled holes of the top shelf over the stand-off until in required position



3 Screw down the top of the stand-off over the top shelf until fully secure, repeat these steps for the rest of the stand-off's

## Optional Internal shelf assembly



1 To attach the internal shelf insert the twist and lock pole into the locator on the shelf



2 Lift the internal shelf to the shelf locators on the base side of the table top. Twist each pole into place until fully secure